

# Community Housing Aotearoa Strategic Plan



## OUR MISSION:

Supporting the growth and development of community housing by providing sector leadership and building capacity

## OUTCOMES:

Our success as the peak body for community housing will result in:



### A RESPONSIVE HOUSING SYSTEM

Meeting housing needs across the continuum and retaining investment to benefit communities across generations.

2021	2025	2030
<ul style="list-style-type: none"> <li>Retained affordability – uplift, capture, retention and recycling – is widely understood and used consistently</li> <li>Adoption of a Human Rights based NZ Housing Strategy</li> <li>'Our Place' provides a sector strategy and development plan contributing to the NZ Housing Strategy.</li> </ul>	<ul style="list-style-type: none"> <li>7 measures of adequacy are regularly measured and reported against</li> <li>Sufficient new supply of social, assisted rental and progressive home ownership is delivered to meet need across the continuum.</li> </ul>	<ul style="list-style-type: none"> <li>7 adequacy measures demonstrating we are on track to 'All New Zealanders well-housed'</li> <li>Homelessness is rare, brief and non-recurring.</li> </ul>



### INCREASED SUPPLY OF ADEQUATE HOMES

Increased rental and ownership choices where housing costs are around 30% of household income and where community housing plays an important role in 'All New Zealanders well-housed.'

2021	2025	2030
<ul style="list-style-type: none"> <li>Housing programmes are available to households across the housing continuum</li> <li>Capital and operating funding is available from multiple sources to meet housing needs in all regions</li> <li>A range of planning tools are available to increase supply.</li> </ul>	<ul style="list-style-type: none"> <li>A community housing regulatory framework that enables providers to play to their strengths</li> <li>Housing that better matches household needs.</li> </ul>	<ul style="list-style-type: none"> <li>The community housing sector delivers 40% of all new social and affordable housing.</li> </ul>



### QUALITY PROVIDERS DELIVERING BETTER RESIDENT AND COMMUNITY OUTCOMES

Community housing providers are delivering quality services against benchmarked practice, working in partnership with residents to create sustainable, flourishing communities.

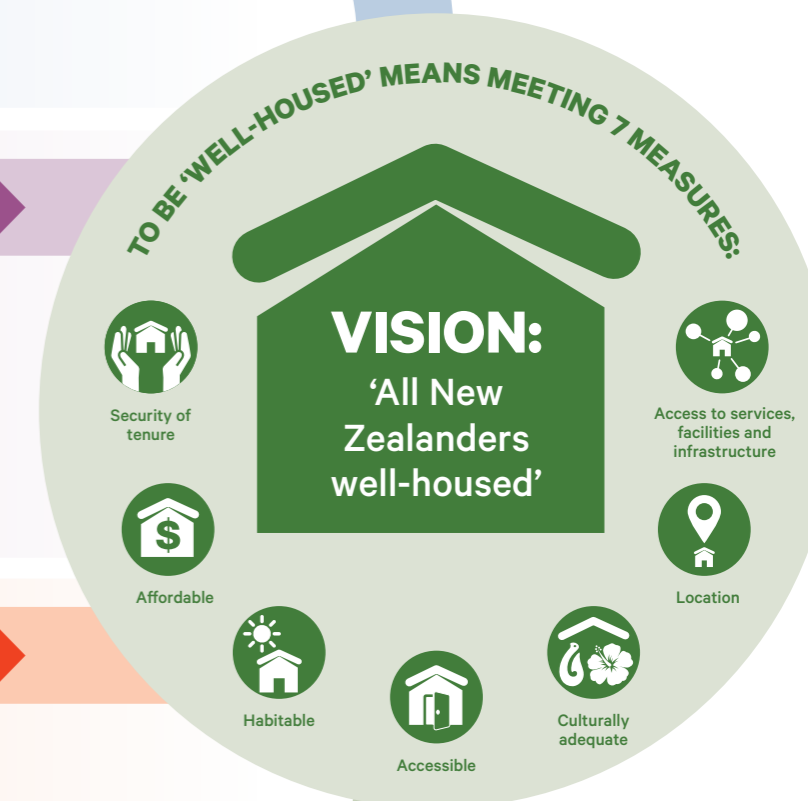
2021	2025	2030
<ul style="list-style-type: none"> <li>Community Housing Aotearoa members participate in benchmarking and publicly report on performance.</li> </ul>	<ul style="list-style-type: none"> <li>50% of Community Housing Providers have involved residents in their decision making.</li> </ul>	<ul style="list-style-type: none"> <li>70% of providers are accredited as meeting best practice standards.</li> </ul>



### CHA IS EFFECTIVE, REPRESENTATIVE AND SUSTAINABLE

CHA provides a sector voice, advocating for the role of the community housing sector in the achievement of 'All New Zealanders well-housed'.

2021	2025	2030
<ul style="list-style-type: none"> <li>Our advocacy is effective and makes the case for growing investment in the sector</li> <li>Our policy advice increases the supply of social and affordable housing through members</li> <li>Support for providers results in their delivery of improved resident and community outcomes</li> <li>Our governance is representative of the sector</li> <li>We are resourced sufficiently to achieve our mission and outcomes.</li> </ul>		



# Community Housing Aotearoa Strategic Plan



## How we will work together to achieve our vision: 'All New Zealanders well-housed'

### STRATEGY TOOLKIT

- Policy advice
- Convening conversations
- Strategic communications
- Brokering partnerships
- Capacity building
- Advocacy
- Research and evaluation

### 'OUR PLACE' SECTOR STRATEGY AND DEVELOPMENT PLAN

#### Policy and regulatory settings

- Demonstrate the value case for sector investment
- Ensure policy and regulatory settings to grow sector are appropriate and enduring
- Improved government/community housing sector collaboration

#### Building organisational and sector capacity

- Consistent access to adequate investment
- Agree standards of service delivery and promoting best practice
- Promote an evidence based approach to housing delivery

#### Promoting partnership and innovation

- Facilitate partnerships playing to the strengths of partners
- Encourage innovation and development of new models

### CODE OF PRACTICE

#### What Membership means – A CHA member organisation agrees to:

- respect and honour the principles of Te Tiriti o Waitangi
- advocate for 'All New Zealanders well-housed'
- operate as a Public Benefit, not-for-profit organisation
- contribute organisational performance data for sector benchmarking; working towards agreed outcome measures that build NZ-specific best practice
- be transparent in its dealings and communications
- promote the community housing sector and its agreed mission, values, and outcomes.

#### In supporting members, and living up to the Code of Practice, CHA will:

- respect and honour the principles of Te Tiriti o Waitangi
- consult with and represent the views of all parts of the sector
- respect and uphold information shared with CHA in confidence
- act in accordance with its adopted Strategic Plan and governance decisions.



### OUR VALUES

- Integrity
- Courage
- Collaboration
- Equity